

RESOLUTION NO. 2022-_____

Amending the 2022 Land and Water Conservation Department Budget

Executive Summary

In 2020, the Jefferson County Board of Supervisors authorized the Jefferson County Land and Water Conservation Department to apply for an Early Detection and Response Grant from the Wisconsin Department of Natural Resources. The purpose of the grant is to manage a population of invasive Phragmites located near the Rock River on County Highway N. A grant of \$5,700 was awarded to Jefferson County by the Department of Natural Resources in 2021 and work on the project will begin in fall of 2022. These funds were not included in the 2022 County budget. Therefore, a 2022 budget amendment is required to increase income and expenditures from this grant.

The Land and Water Conservation Department participates in the Multi-Discharger Variance Program through the Wisconsin Department of Natural Resources. Rock River Basin industries and municipalities provide funds to counties to implement conservation projects that will reduce phosphorus delivery to waterways. The amount of funding from this program included in the 2022 budget was an estimate provided by the Department of Natural Resources. The final amount of funds received in 2022 was \$27,860 more than the estimate. Therefore, a 2022 budget amendment is required to increase income and expenditures from this program.

The Land and Water Conservation Committee approved this resolution at its May 18, 2022, meeting and recommended forwarding to the County Board for approval.

WHEREAS, the Executive Summary is incorporated into this resolution, and

WHEREAS, Jefferson County Land and Water Conservation Department was awarded an Early Detection and Response grant from the Department of Natural Resources for \$5,700, and

WHEREAS, the Early Detection and Response grant will be used for treatment of an invasive species and reseeding the area with native species, and

WHEREAS, the Jefferson County Land and Water Conservation Department received \$27,860 more funds for the Multi-Discharger Variance Program than contained in the 2022 budget, and

WHEREAS, the Multi-Discharger Variance Program funding will be used to implement cover crops and pasture establishment on farmland in Jefferson County.

NOW, THEREFORE, BE IT RESOLVED that the Jefferson County Board of Supervisors hereby approves the amendment of the 2022 Land and Water Conservation Department budget to include \$5,700 for the implementation of the Early Detection and Response grant and an increase of \$27,860 for the Multi-Discharger Variance Program.

Fiscal Note: This is a budget amendment that increases revenue and expenditure by \$33,560 for two projects. This resolution authorizes the County Finance Director to make the budget adjustments necessary to enact this resolution. As a budget amendment, County Board approval requires a two-thirds vote of the entire membership of the County Board (20 members of the 30-member County Board must vote in favor of the budget amendment).

Referred By:
Finance Committee

REVIEWED: Corporation Counsel: _____; Finance Director: _____



Jefferson County Soil Builders

June 2, 2022 Shop Talk

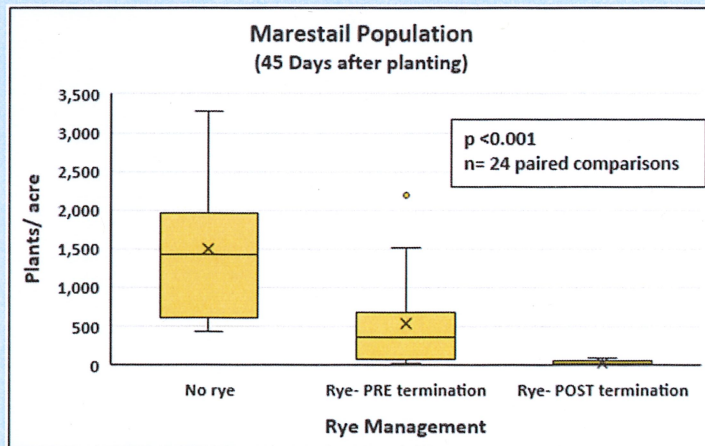
6:00 pm - 8:00 pm

Twilight Plot Tour - Using Cereal Rye to Suppress Weeds

Dr. Jim Stute, STUTE Farms

Tom Burlingham, Jefferson County Farmer

Jim and Tom will discuss suppression of problematic glyphosate resistant weeds by planting green and terminating rye late. Results from 2021 (shown below) demonstrated a 98% reduction in marestalk population relative to preemergence herbicide alone across 3 locations. In addition to soil benefits, this practice holds promise as a resistance management strategy.



Location: N1892 County Road E, Palmyra, WI
Park on both sides of Trewyn Lane, plot is north of Trewyn Lane



Questions:



Dean Weichmann at 920-988-4620

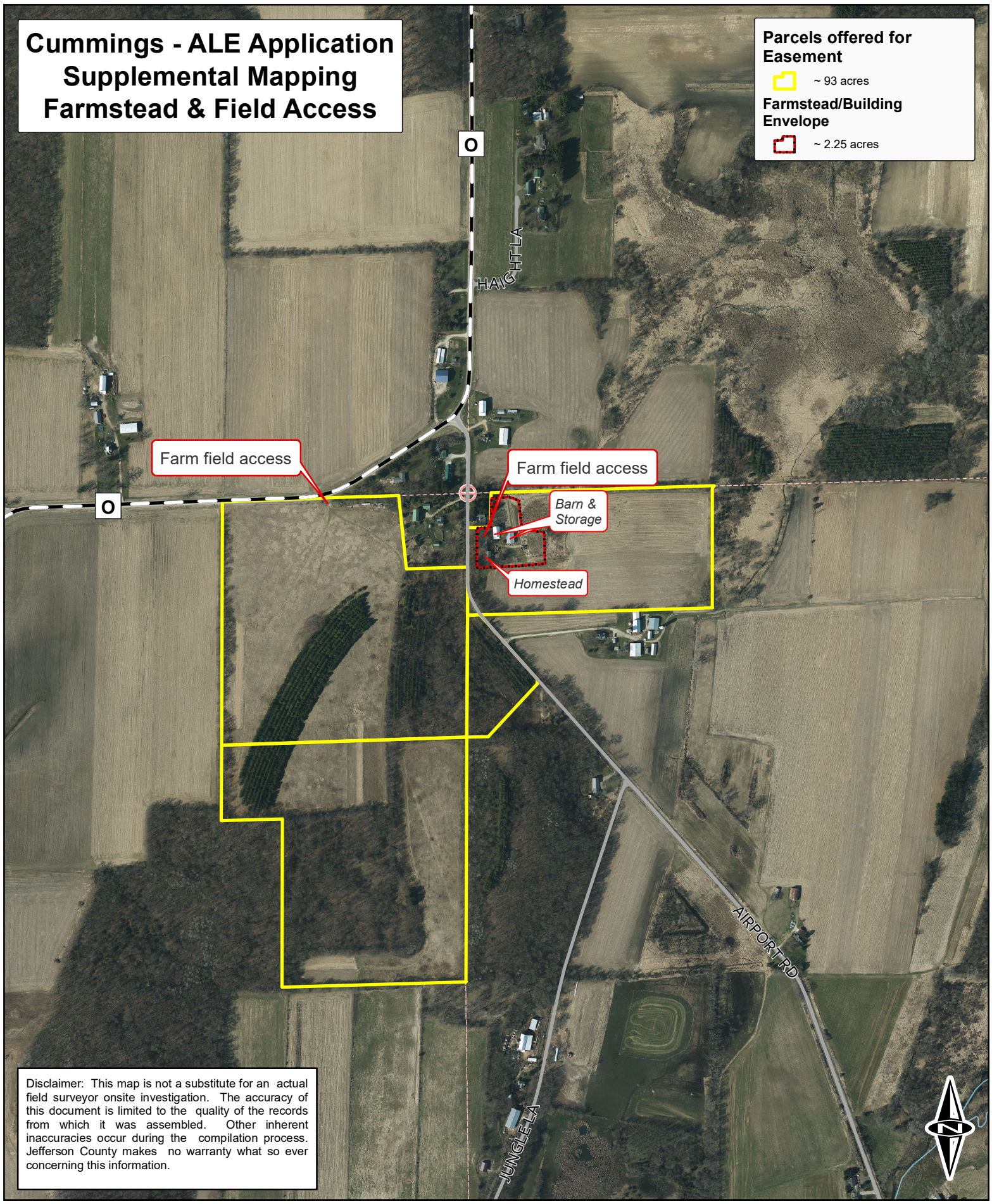
Tom Burlingham at 920-723-6848



Funding for this field day was made possible, in part, by the Wisconsin Department of Agriculture Trade and Consumer Protection (DATCP). The views expressed in written materials, publications, speakers, and moderators do not necessarily reflect the official policies of DATCP; nor does any mention of trade names, commercial practices, or organization imply endorsement by the State of Wisconsin.

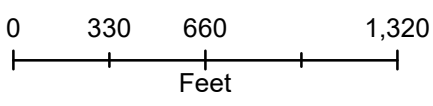
Cummings - ALE Application Supplemental Mapping Farmstead & Field Access

Parcels offered for Easement
 ~ 93 acres
Farmstead/Building Envelope
 ~ 2.25 acres



Disclaimer: This map is not a substitute for an actual field surveyor onsite investigation. The accuracy of this document is limited to the quality of the records from which it was assembled. Other inherent inaccuracies occur during the compilation process. Jefferson County makes no warranty what so ever concerning this information.

Data Sources:
 Easement Parcel Data
 Roadway Data
 Cadastral Data
 Jefferson County, Land Information Office



1 inch = 660 feet
 Map compiled by:
 Jefferson County Land & Water
 Conservation Department
 November 2021



ROLLEFSON ~ 94 acres



Search Results: Parcel List

- Override 1
- Tax Parcels
- Municipal Boundaries
- Property Boundary
- Old Lot/Meander Lines
- Rail Right of Ways
- Road Right of Ways
- Section Lines
- Surface Water
- Map Hooks
- Tax Parcels

